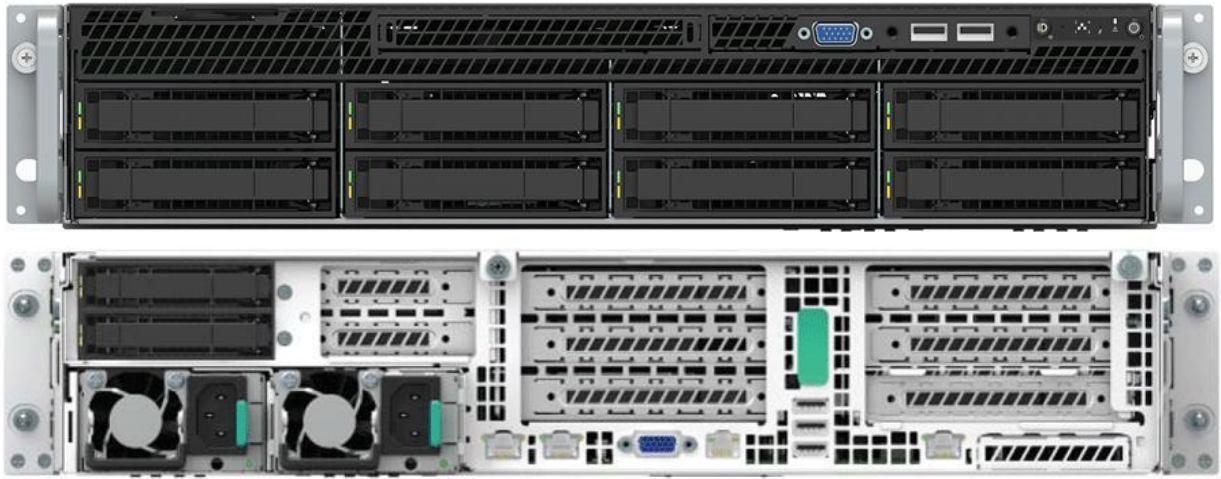


COLFAX CX2260i-T-S12-X7 SERVER



Key Features

- ❖ 2x Intel® Xeon® Scalable Processors
- ❖ 24x DIMM Sockets Supporting ECC DDR4 RDIMM and LRDIMM
- ❖ Support for 3 Riser Cards:
 - - 2x 3 PCIe* slot riser cards (Each riser supports up to two full height full length add-in cards and one full height ½ length add-in card)
 - - 1x 2 PCIe* slot riser card (Supports 2 low profile add-in cards)
- ❖ 8x 3.5" Hot-Swap Drives
- ❖ Optional 2x Rear Hot-Swap 2.5" Drive Bays
- ❖ Integrated Dual 10GbE Ports
- ❖ Optional Intel® OCP Module
- ❖ Optional Intel® SAS RAID Module
- ❖ Optional Intel® Remote Management Module 4 Lite

Click [here](#) for more information or email sales@colfax-intl.com.



Colfax International | 750 Palomar Ave, Sunnyvale, CA 94085 USA | www.colfax-intl.com | Tel: 408 730 2275

2018 Colfax International. All rights reserved. Information in this document is subject to change without notice. Prices, Availability, Specifications are subject to change without notice. Colfax International is not responsible for any data, typographical or technical errors.